



**India Meteorological Department
(Ministry of Earth Sciences)**

NATIONAL BULLETIN NO. 27 (BOB/07/2024)

TIME OF ISSUE: 0550 HOURS IST

DATED: 30.11.2024

FROM: INDIA METEOROLOGICAL DEPARTMENT (FAX NO. 24643965/24699216/24623220)

TO: CONTROL ROOM, NDM, MINISTRY OF HOME AFFAIRS (FAX.NO. 23093750)

CONTROL ROOM NDMA (FAX.NO. 26701729)

CABINET SECRETARIAT (FAX.NO.23012284, 23018638)

PS TO HON'BLE MINISTER FOR S & T AND EARTH SCIENCES (FAX NO.23316745)

SECRETARY, MOES (FAX NO. 24629777)

H.Q. (INTEGRATED DEFENCE STAFF AND CDS) (FAX NO. 23005137/23005147)

DIRECTOR GENERAL, DOORDARSHAN (23385843)

DIRECTOR GENERAL, AIR (23421105, 23421219)

PIB MOES (FAX NO. 23389042)

UNI (FAX NO. 23355841)

D.G. NATIONAL DISASTER RESPONSE FORCE (NDRF) (FAX NO. 26105912, 2436 3260)

DIRECTOR, PUNCTUALITY, INDIAN RAILWAYS (FAX NO. 23388503)

CHIEF SECRETARY, ANDAMAN & NICOBAR ISLANDS (FAX NO. 03192-232656)

CHIEF SECRETARY, TAMIL NADU (FAX NO. 044-25672304)

CHIEF SECRETARY, ANDHRA PRADESH (FAX NO. 0863-2441029)

CHIEF SECRETARY, PUDUCHERRY (FAX NO. 0413-2334145)

CHIEF SECRETARY, ODISHA (FAX NO. 0674-2536660)

Sub: Cyclonic Storm "FENGAL" [pronounced as FEINJAL] over Southwest Bay of Bengal (Cyclone Warning: Red Message for North Tamil Nadu, Puducherry and adjoining south Andhra Pradesh Coasts)

The Cyclonic Storm "FENGAL" [pronounced as FEINJAL] over Southwest Bay of Bengal moved north-northwestwards with a speed of 07 kmph during past 6 hours and lay centred at 0230 hours IST of today, the 30th November 2024 over the same region near latitude 11.9°N and longitude 81.5°E, about 370 km north of Trincomalee, 210 km northeast of Nagappattinam, 180 km east of Puducherry and 190 km southeast of Chennai.

It is likely to move nearly west-northwestwards and cross north Tamil Nadu-Puducherry coasts between Karaikal and Mahabalipuram close to Puducherry as a cyclonic storm with a wind speed of 70-80 kmph gusting to 90 kmph during afternoon of 30th November.

The system is being continuously monitored.

Forecast track and intensity are given in the following table:

Date/ Time (IST)	Position (Lat. °N/ long. °E)	Maximum sustained surface wind speed (Kmph)	Category of cyclonic disturbance
30.11.24/0230	11.9/81.5	70-80 gusting to 90	Cyclonic Storm
30.11.24/0530	12.0/81.1	70-80 gusting to 90	Cyclonic Storm
30.11.24/1130	12.1/80.4	70-80 gusting to 90	Cyclonic Storm
30.11.24/1730	12.0/79.8	65-75 gusting to 85	Cyclonic Storm
30.11.24/2330	11.9/79.1	55-65 gusting to 75	Deep Depression

Warnings:

(i) Rainfall Warning:

Tamil Nadu & Puducherry: Light to moderate rainfall at many places with **heavy to very heavy rainfall** at a few places and **extremely heavy rainfall** at isolated places over north Tamil Nadu – Puducherry on 30th November; **heavy to very heavy rainfall** at isolated places over interior Tamil Nadu on 01st December, and **heavy rainfall** at isolated places over Tamil Nadu on 02nd and 03rd December.

Coastal Andhra Pradesh: Light to moderate rainfall at many places with **heavy to very heavy rainfall** with **extremely heavy rainfall** at isolated places over south coastal Andhra Pradesh on 30th November, and **heavy rainfall** at isolated places on 01st December.

Royalaseema: Light to moderate rainfall at many places with **heavy to very heavy rainfall** with **extremely heavy rainfall** at isolated places is likely on 30th November; **heavy rainfall** at isolated places on 01st December.

South interior Karnataka: Light to moderate rainfall at many places with isolated **heavy rainfall** is likely on 30th November, **heavy to very heavy rainfall** at isolated places on 01st & 2nd December.

Kerala: Light to moderate rainfall at many places with isolated heavy rainfall is likely on 30th November, **heavy to very heavy rainfall** at isolated places on 01st & 2nd December.

(ii) Wind warning:

- **Southwest Bay of Bengal:** Gale wind speed reaching 70-80 kmph gusting to 90 kmph is prevailing over southwest Bay of Bengal. It is likely to decrease becoming 55-65 kmph gusting to 75 kmph by evening of 30th November.
- **Adjoining areas of westcentral Bay of Bengal:** Squally wind speed reaching 50-60 kmph gusting to 70 kmph is likely to prevail over adjoining areas of westcentral Bay of Bengal till evening of 30th November. It is likely to decrease thereafter.
- **Along & off North Tamil Nadu – Puducherry and adjoining South Andhra Pradesh coasts:** Gale wind speed reaching 70-80 kmph gusting to 90 kmph is prevailing along & off **North Tamil Nadu - Puducherry and adjoining South Andhra Pradesh coasts**. It is likely to prevail till evening of 30th November and decrease thereafter.
- **Costal districts of north Tamil Nadu & south Andhra Pradesh:** Gale wind speed reaching 60-70 kmph gusting to 80 kmph is prevailing over costal districts of Tamil Nadu (Tiruvallur, Chennai, Chengalpattu, Villupuram and Puducherry) and Andhra Pradesh (Tirupati and Nellore). It is likely to increase becoming 70-80 kmph gusting to 90 kmph over costal districts of Tamil Nadu (**Tiruvallur, Chennai, Chengalpattu, Villupuram, Puducherry Cuddalore, Mayiladuthurai and Nagappattinam**) and Andhra Pradesh (**Tirupati, Nellore and Prakasham**) from 30th November morning to evening of 30th November. It is likely to decrease thereafter.
- **Along & off East Sri Lanka coasts:** Squally wind speed reaching 55-65 kmph gusting to 75 kmph is very likely to prevail **Along & off East Sri Lanka coasts** till morning of 30th November. It would decrease thereafter.
- **Along & off South Tamil Nadu coast and Gulf of Mannar:** Squally wind speed reaching 45-55 kmph gusting to 65 kmph is likely to prevail till 30th evening and gradually decrease thereafter.

(iii) Sea condition:

Very Rough to High Sea conditions is very likely over southwest Bay of Bengal adjoining areas of westcentral Bay of Bengal, Gulf of Mannar and along & off Tamil Nadu-Puducherry, South Andhra Pradesh and East Sri Lanka coasts till evening of 30th November. It will gradually improve becoming Very rough to rough till night of 30th November.

(iv) Flash Flood Guidance:

24 hours Outlook for the Flash Flood Risk (FFR) till 2330 IST of 30-11-2024 :

Moderate to High flash flood risk likely over few watersheds & neighbourhoods of following Met Sub-divisions during next 24 hours.

Coastal Andhra Pradesh & Yanam - Nellore district. Rayalaseema - Chittoor and Kadapa districts.

Tamil Nadu - Puducherry & Karaikal - Puduchery, Ariyalur, Chennai, Cuddalore, Dharampuri, Kanchipuram, Krishnagiri, Salem, Tiruvallur, Tiruvannamalai, Vellore and Villupuram districts.

Surface runoff/ Inundation may occur at some fully saturated soils & low-lying areas over Area of Concern (AoC) as shown in map due to expected rainfall occurrence in next 24 hours.

(v) Storm surge Warning:

Storm surge of about 1 meter height above the astronomical tide is likely to inundate the low lying areas of the coastal districts of north Tamil Nadu, Puducherry and adjoining south Andhra Pradesh during the time of landfall.

(vi) Fisherman warning:

- Total suspension of fishing operations.
- Fishermen are advised not venture into southwest Bay of Bengal adjoining areas of westcentral Bay of Bengal, Gulf of Mannar and along & off Tamil Nadu-Puducherry, South Andhra Pradesh and East Sri Lanka coasts till 30th November.
- Fishermen out at sea are advised to return to coast.

(vii) Impact Expected [over coastal districts of North Tamil Nadu (Tiruvallur, Chennai, Chengalpattu, Villupuram, Puducherry Cuddalore, Mayiladuthurai and Nagappattinam) and Andhra Pradesh (Tirupati, Nellore and Prakasham)]

- Localized Flooding of roads, water logging in low lying areas and closure of underpasses mainly in urban areas of the above region.
- Occasional reduction in visibility due to heavy rainfall.
- Disruption of traffic in major cities due to water logging in roads leading to increased travel time.
- Minor damage to kutcha roads.
- Damage to horticulture and standing crops in some areas due to inundation.
- Partial disruption of power and communication lines.
- Breaking of tree branches, uprooting of small trees including banana, papaya and drumstick.

(viii) Action Suggested

- Total suspension of fishing operations.
- Fishermen are advised not venture into southwest Bay of Bengal adjoining areas of westcentral Bay of Bengal, Gulf of Mannar and along & off Tamil Nadu-Puducherry, South Andhra Pradesh and East Sri Lanka coasts till 30th November.
- Fishermen out at sea are advised to return to coast.
- The ships plying over the area need to be regulated.
- People should stay in safe places during 30th morning to evening.
- Check for traffic congestion on your route before leaving for your destination.
- Follow any traffic advisories that are issued in this regard.
- Avoid going to areas that face the water logging problems often.
- Special care may be taken for fishing ponds and poultry over coastal areas.
- Avoid staying in vulnerable structure.

(ix) Agromet advisories [over coastal districts of Tamil Nadu – Puducherry and adjoining south Andhra Pradesh]

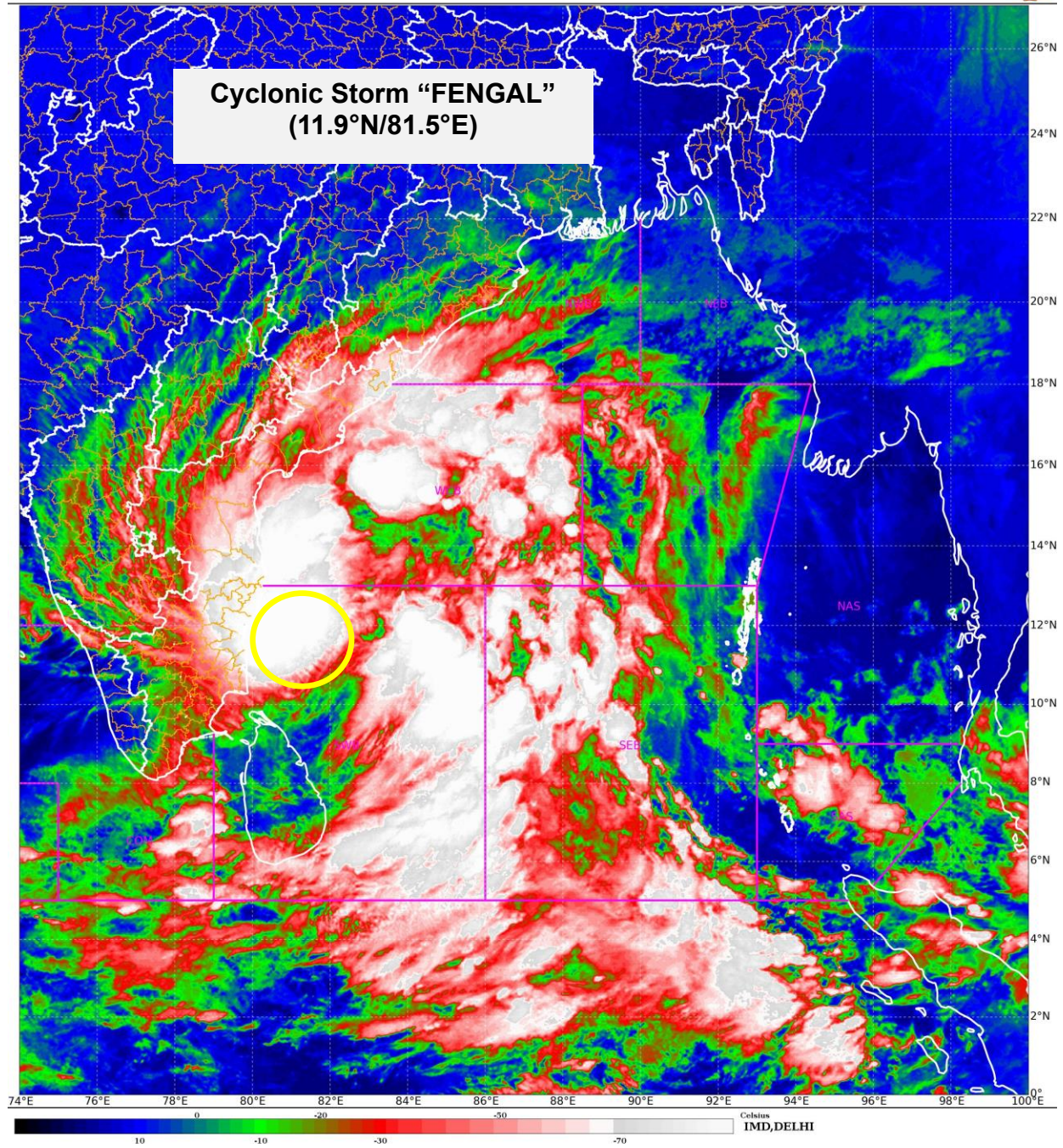
Provide adequate drainage facilities for the removal of excess water from rice, cotton, sugarcane, turmeric and vegetable fields, coconut and banana orchards. Provide mechanical support to banana plants to prevent lodging.

- Make arrangements to drain out excess water from the standing crop fields and fruit orchards in Kerala and Coastal Andhra Pradesh.
- Harvest the matured crops and keep it in safe place.
- Provide mechanical support to horticultural crops and staking to vegetables.

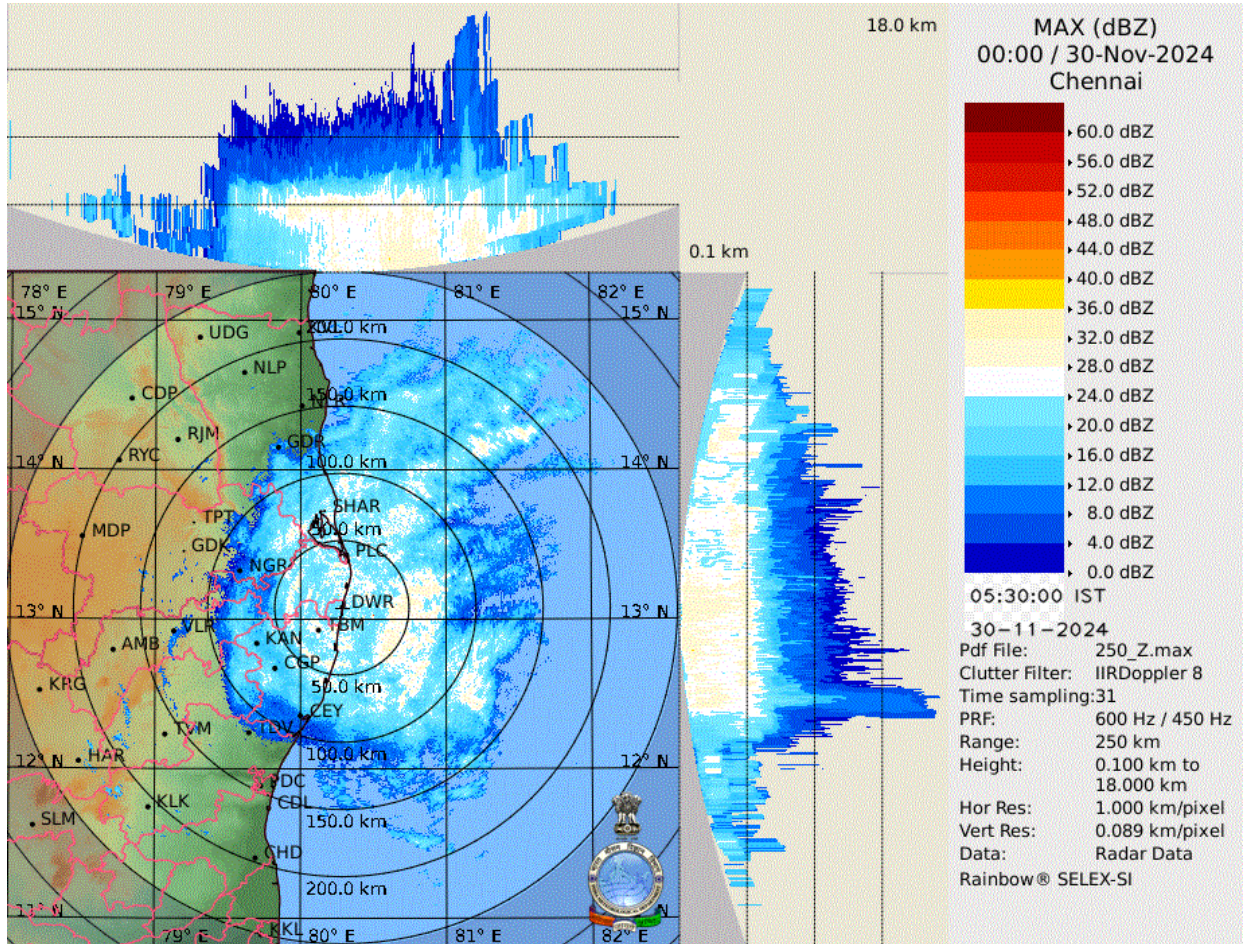
Next bulletin will be issued at 0830 hours IST of today, the 30th November, 2024.

**(Dr. Shashi Kant)
Scientist D, RSMC, New Delhi**

*Copy to: ACWC Kolkata/ACWC Chennai/CWC Bhubaneswar/MC, Amaravati/MC,
Thiruvananthapuram/CWC, Vishakhapatnam*

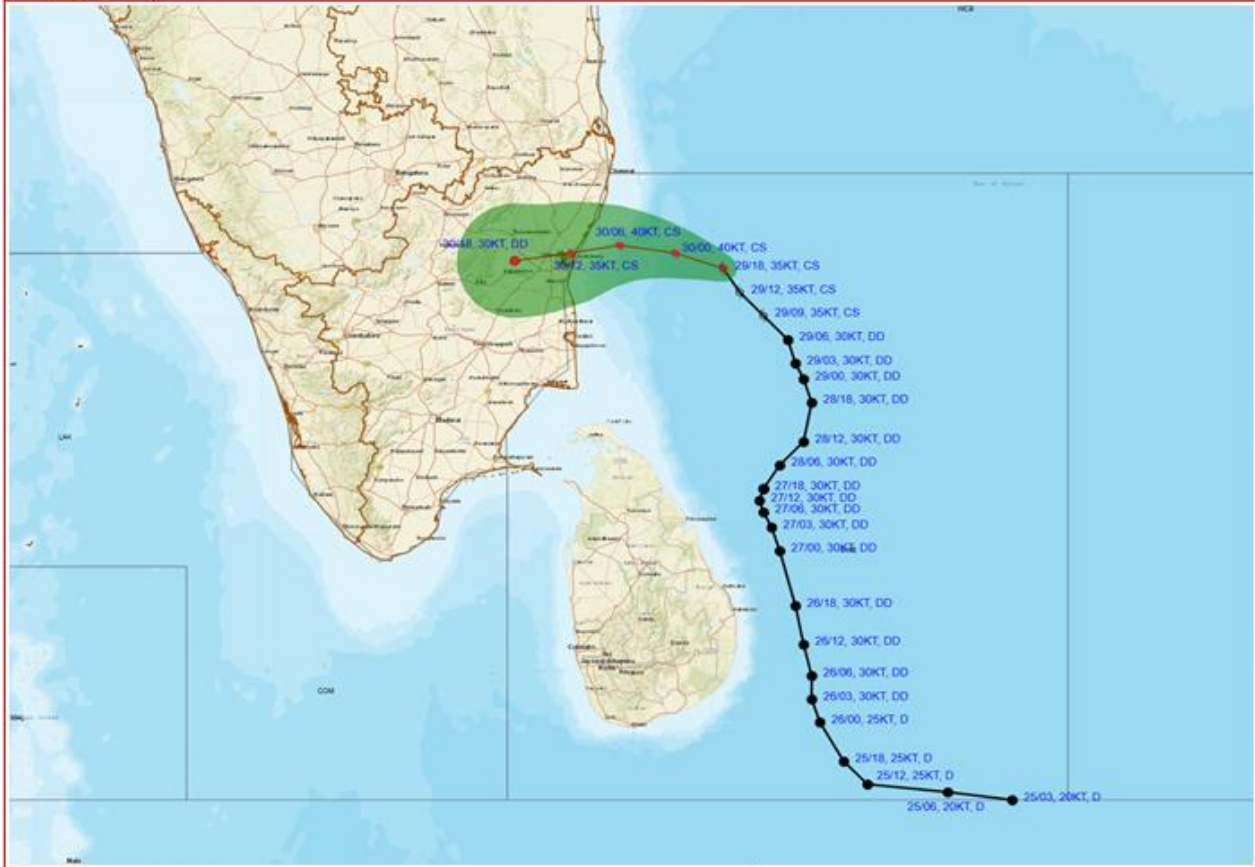


Radar Image of Chennai





OBSERVED AND FORECAST TRACK ALONG WITH CONE OF UNCERTAINTY OF CYCLONIC STORM "FENGAL" OVER SOUTHWEST BAY OF BENGAL BASED ON 1800 UTC (2330 HRS. IST) OF 29TH NOVEMBER, 2024

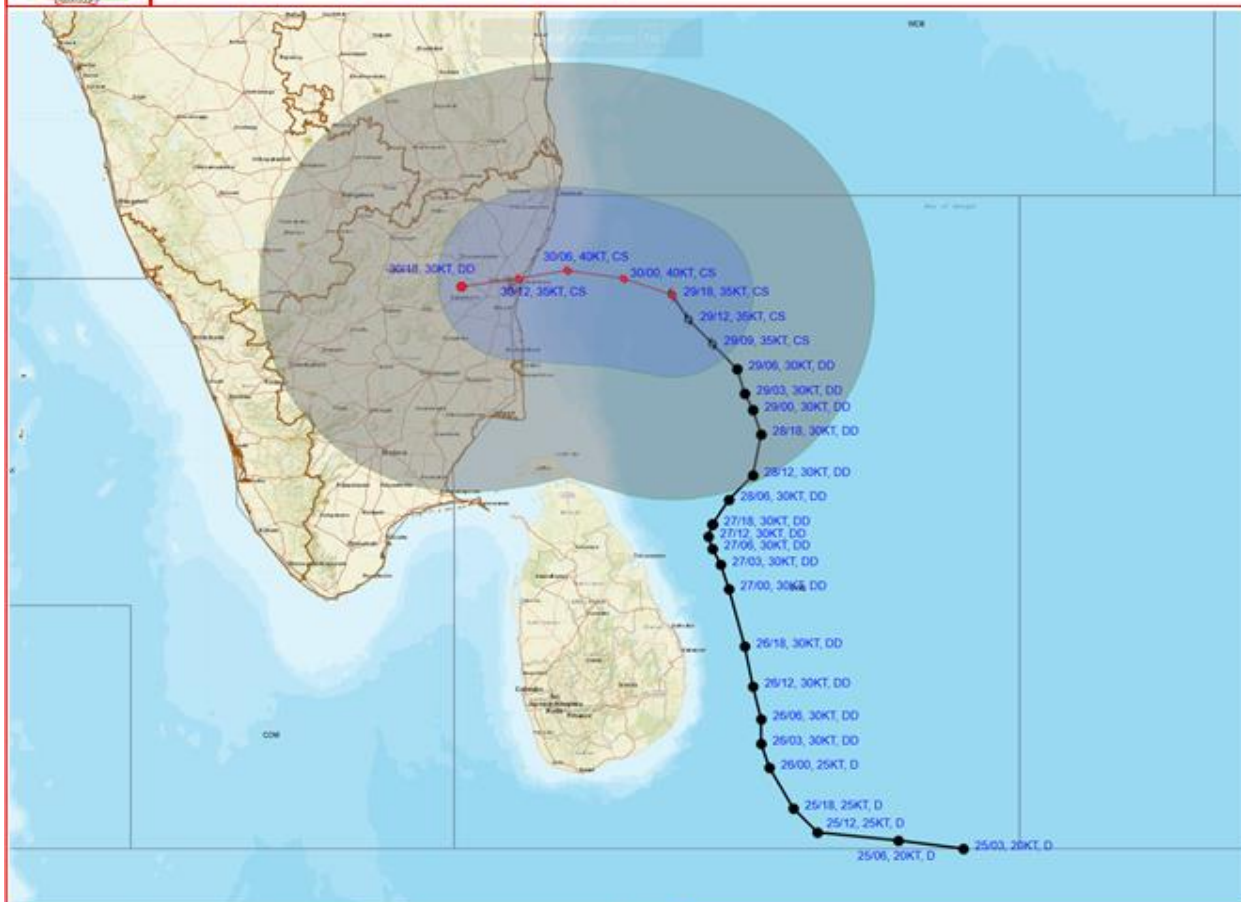


DATE/TIME	: IN UTC	LESS THAN 34 KT 34-47 KT ≥ 48 KT OBSERVED TRACK FORECAST TRACK CONE OF UNCERTAINTY
IST	: UTC + 0530	
KT	: NAUTICAL MILE/HOUR = 1.85 KM/HOUR	
LPA	: LOW PRESSURE AREA	
WML	: WELL MARKED LOW PRESSURE AREA	
D	: DEPRESSION (17-27 KT)	
DD	: DEEP DEPRESSION (28-33 KT)	
CS	: CYCLONIC STORM (34-47 KT)	
SCS	: SEVERE CYCLONIC STORM (48-63 KT)	
VSCS	: VERY SEVERE CYCLONIC STORM (64-89 KT)	
ESCS	: EXTREMELY SEVERE CYCLONIC STORM (90-119 KT)	
SuCS	: SUPER CYCLONIC STORM (≥120 KT)	

Forecast	DISTANCE (KM) AND DIRECTION FROM STATIONS				
Date and Time (UTC)	TRINCOMALEE	BATTICALOA	NAGAPPATTINAM	PUDUCHERRY	CHENNAI/MINAMBAKKAM
29.11.24/1800	360, N	460, N	230, ENE	210, E	210, SE
30.11.24/1800	440, NNW	660, NNW	160, NNW	80, W	170, SW



OBSERVED AND FORECAST TRACK ALONGWITH QUADRANT WIND DISTRIBUTION OF CYCLONIC STORM "FENGAL" OVER SOUTHWEST BAY OF BENGAL BASED ON 1800 UTC (2330 HRS. IST) OF 29TH NOVEMBER, 2024.



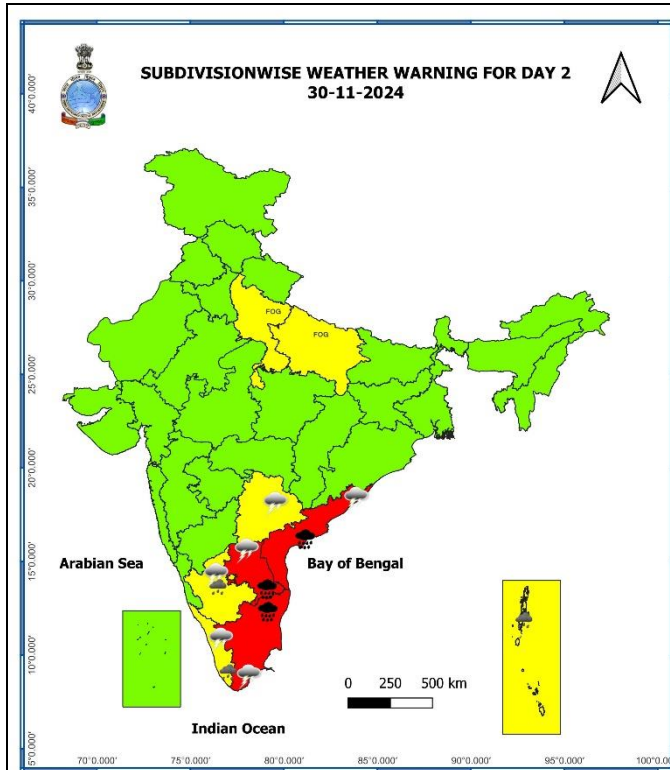
DATE/TIME : IN UTC
 IST : UTC + 0530
 KT : NAUTICAL MILE S/HOUR = 1.85 KM/HOUR
 LPA : LOW PRESSURE AREA
 WML : WELL MARKED LOW PRESSURE AREA
 D : DEPRESSION (17-27 KT)
 DD : DEEP DEPRESSION (28-33 KT)
 CS : CYCLONIC STORM (34-47 KT)
 SCS : SEVERE CYCLONIC STORM (48-63 KT)
 VSCS : VERY SEVERE CYCLONIC STORM (64-89 KT)
 ESCS : EXTREMELY SEVERE CYCLONIC STORM (90-119 KT)
 SuCS : SUPER CYCLONIC STORM (≥120 KT)

● LESS THAN 34 KT
 ⚡ 34-47 KT
 ● ≥ 48 KT
 — OBSERVED TRACK
 — FORECAST TRACK
 ○ CONE OF UNCERTAINTY
AREA OF MAXIMUM SUSTAINED WIND SPEED:
 ■ 28-33 KT (52-61 KMPH)
 ■ 34-49 KT (62-91 KMPH)
 ■ 50-63 KT (92-117 KMPH)
 ■ ≥ 64 KT (≥118 KMPH)

IMPACT OVER THE SEA

MSW (knot/kmph)	Impact	Action
28-33 (52-61)	Very rough seas	Total suspension of fishing operations
34-49 (62-91)	High to very high seas	Total suspension of fishing operations
50-63 (92-117)	Very high seas	Total suspension of fishing operations
≥ 64 (≥118)	Phenomenal	Total suspension of fishing operations

Weather Warning Graphics



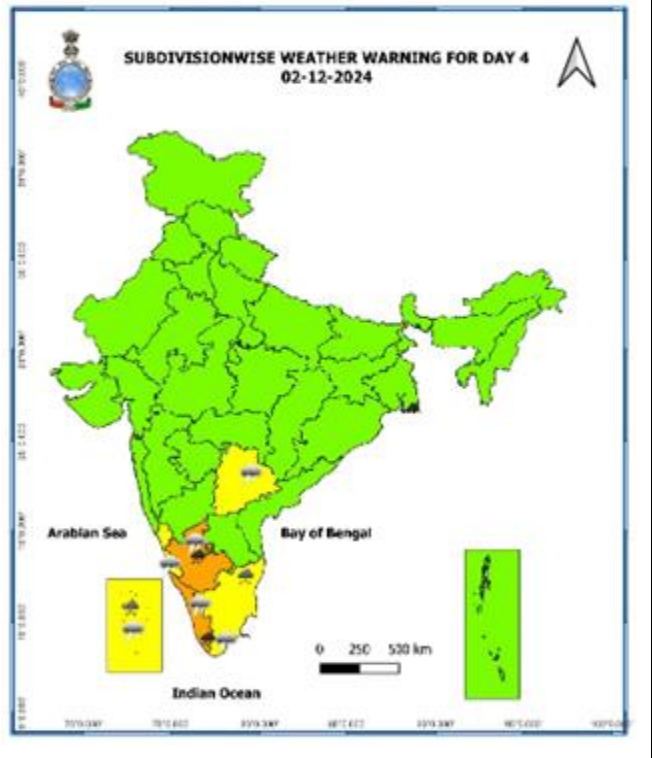
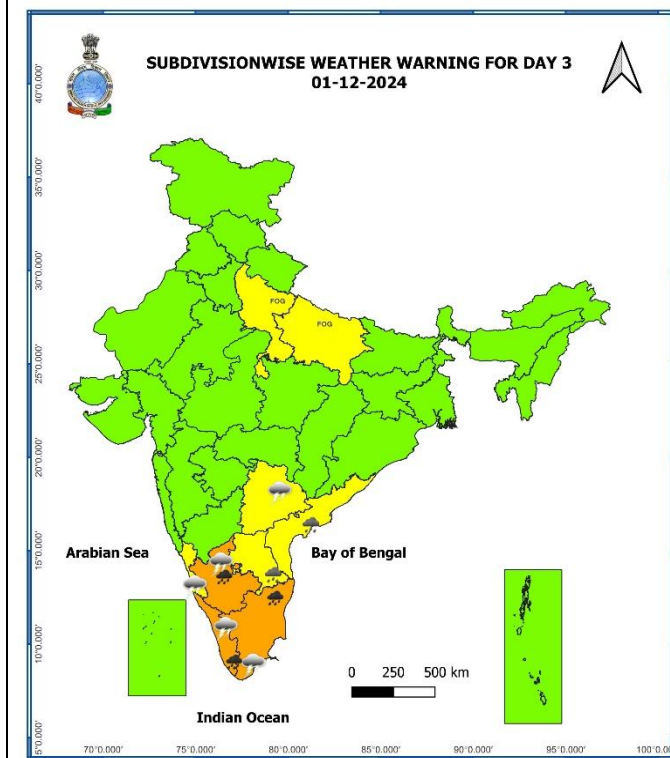
- Fog
- Heavy Rain
- Very Heavy Rain
- Extremely Heavy Rain
- Thunder & Lightning
- Hailstorm
- Dust Raising Winds
- Heavy Snow
- Dust Storm
- Heat Wave
- Warm Night
- Hot Day
- Hot & Humid
- Cold Wave
- Cold Day
- Ground Frost
- Strong Surface Winds

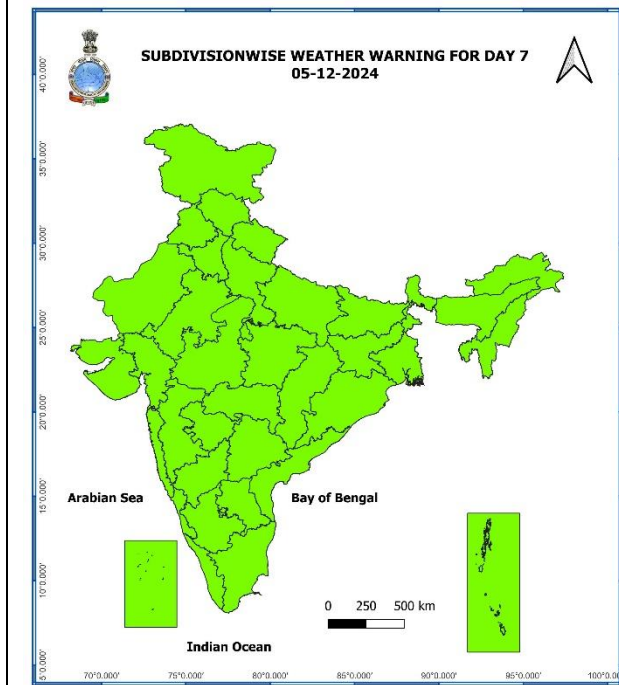
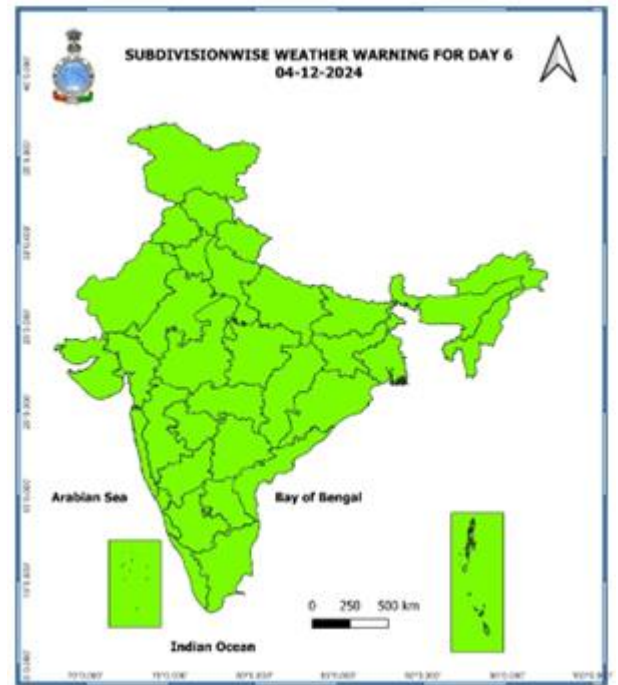
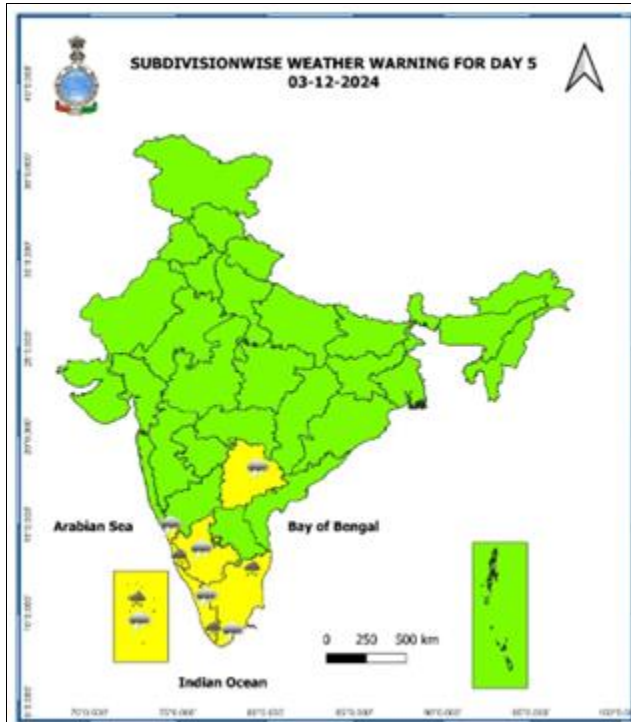
COLOUR CODED WARNING

	No Warning (No Action)
	Watch (Be Aware)
	Alert (Be Prepared To Take Action)
	Warning (Take Action)

Probabilistic Forecast

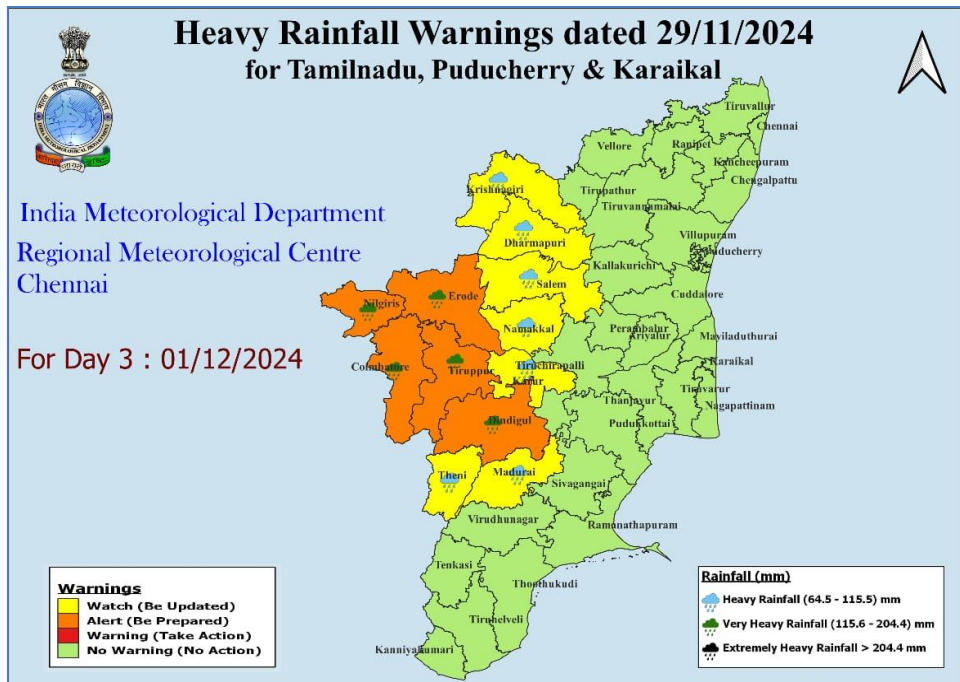
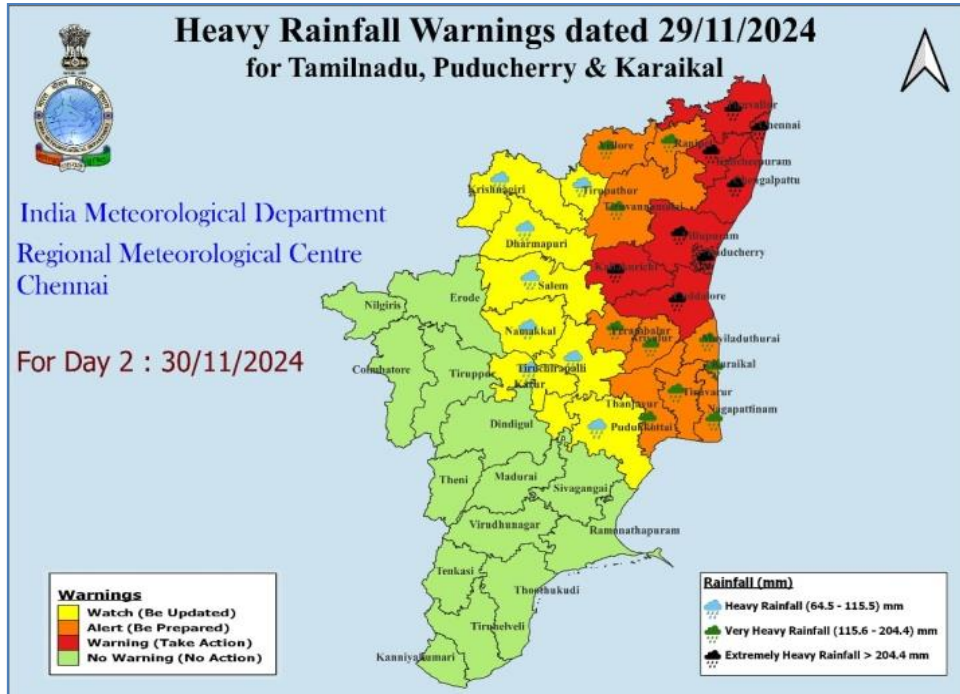
Terms	Probability of Occurrence (%)
Unlikely	< 25
Likely	25 - 50
Very Likely	50 - 75
Most Likely	> 75





- Action may be taken based on **ORANGE AND RED** COLOUR warnings.
- Vulnerable regions likely urban and hilly areas action may be initiated for heavy rainfall warning.
- As the lead period increases forecast accuracy decreases.

District-Wise Warning Graphics of Tamil Nadu & Puducherry



District-Wise Warning Graphics of Andhra Pradesh

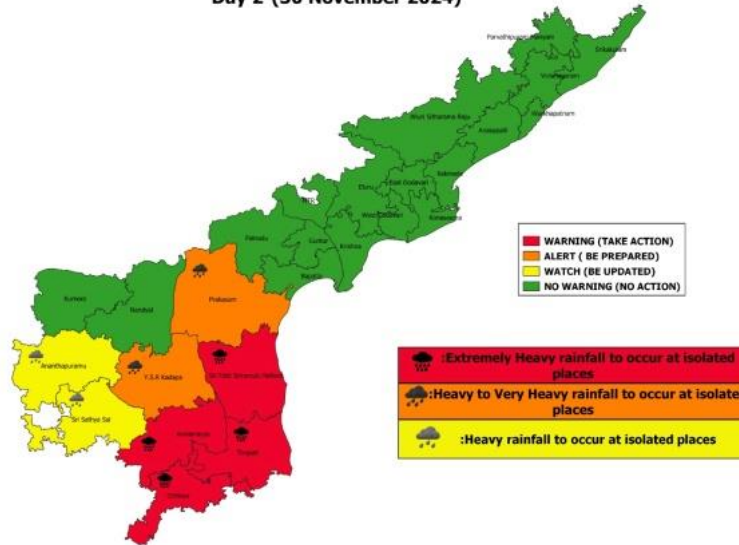


Rainfall warnings for Andhra Pradesh and Yanam.
Valid from 0830 hrs IST of 30.11.2024 to 0830 hrs IST of 01.12.2024

Date of Issue:- 29 November 2024



Day 2-(30 November 2024)

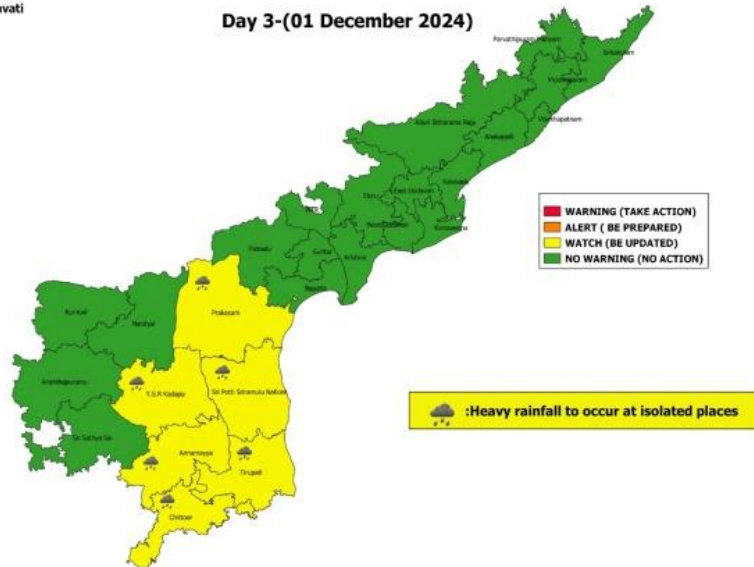


Rainfall warnings for Andhra Pradesh and Yanam.
Valid from 0830 hrs IST of 01.12.2024 to 0830 hrs IST of 02.12.2024

Date of Issue:- 29 November 2024



Day 3-(01 December 2024)



Flash Flood Guidance

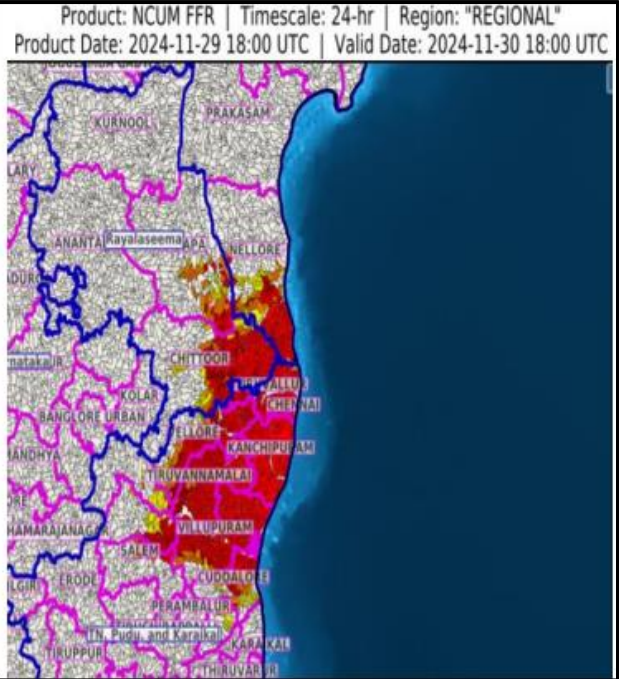
24 hours Outlook for the Flash Flood Risk (FFR) till 2330 IST of 30-11-2024 :

Moderate to High flash flood risk likely over few watersheds & neighbourhoods of following Met Sub-divisions during next 24 hours.
Coastal Andhra Pradesh & Yanam - Nellore district.

Rayalaseema - Chittoor and Kadapa districts.

Tamil Nadu - Puducherry & Karaikal - Puduchery, Ariyalur, Chennai, Cuddalore, Dharampuri, Kanchipuram, Krishnagiri, Salem, Tiruvallur, Tiruvannamalai, Vellore and Villupuram districts.

Surface runoff/ Inundation may occur at some fully saturated soils & low-lying areas over Area of Concern (AoC) as shown in map due to expected rainfall occurrence in next 24 hours.



Flash Flood Risk

High Risk (Take Action)

Moderate Risk (Be Prepared)

Low Risk (Be Updated)

Fishermen Warning Graphics

